

NEW DECOMPRESSION SWITCH R-233DS

Wildfire is pleased to introduce the latest available option for its Mark-3 model fire pump: A new version decompression switch. This new feature will significantly facilitate the starting of our Mark-3.

To order a new Mark-3 with optional decompression switch, please use the following part-number: MK-3-DS.

To convert existing Mark-3's, simply replace the cylinder head with an R-233DS (New cylinder head including a decompression switch assembly).

Key Characteristics

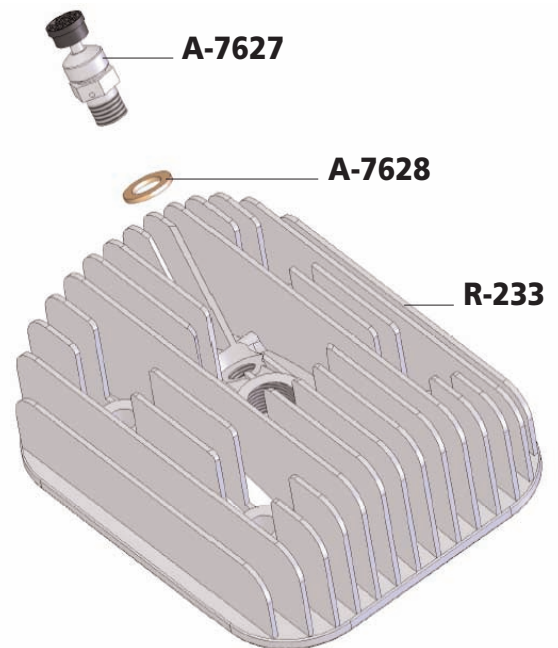
- Decompression switch makes easy pulling / starting of recoil starter on high compression MK-3
- Engine fires up much easier
- No kick back
- Easily engaged, simply push decompression switch in
- Automatically disengages/closes when engine starts

Parts Breakdown

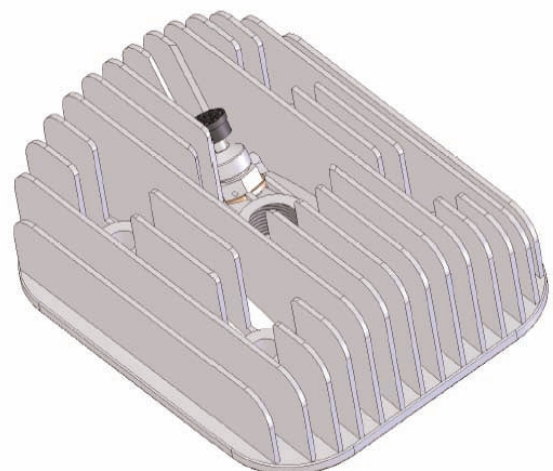
- Decompression Switch: **A-7627**
- Copper Washer: **A-7628**
- Cylinder Head: **R-233**
(machined head not sold separately)
- Head Gasket: **R-238** (not shown)

Installation notes

- Torque value for decompression switch: 190-210 in-lbs (21-24 Nm).
- Install cylinder head with decompression switch oriented towards pump end.



Exploded view R-233DS



R-233DS